



FOREWORD

Greetings from Lok Sevashram Chikhsaura!

We made a modest beginning in 1993 with limited programs in Nalanda district but now we have spread our activities comprehensively to Hilsa, Tharthari, Chandi, Nagarnausa, Ekangarsari and Karaiparsurai blocks in Nalanda district in Bihar. This journey of twenty years, with several ups and downs, has been a huge learning experience for us.



As this report shows we either directly provide services or facilitate the needy to access services provided by others. The focus of each program has been the weaker sections, sick, poor, indigent and destitute. We are now at a cusp of growth to take the next step from providing facilities and services to providing long-term solutions. During all these years, we adopted an integrated approach towards health- Mother and Child Health, Tuberculosis, HIV/AIDS, Kalazar and Malaria preventions, hygiene, nutrition and preventive care, so that the overall health of the people improves. Similarly, our other programs addressing issues of education, child support, eye check up/operations, skill development and women's empowerment also need to be suitably enhanced. A set of villages, slums and urban localities get benefits of our programs in our operational area. During last 20 years, we have developed a good rapport with the beneficiaries in our target areas. We need to convert the goodwill for proactive engagement of these beneficiaries in a number of need based programs in coming years. The involvement of the local community will be essential for implementing our programs. These initiatives will be a major step towards creating successful and replicable models for development and growth.

To this end, we need to bring about a change in the way we do things. To begin with, we need to change the way we collect data. At present, all information of our day to day activities is captured in a daily report so that we can maintain a high level of transparency and accountability. We now need to augment this exercise with continuous system of impact assessment and course correction. For our new initiatives we need to upgrade our governance as well as the skills of our coordinators and field staff. We would like to bring more value to our donors- (institutional and individual) for their unstinted support. We also hope to garner the support of more donors in the future.

In all these years, we have been unwavering in our mission to assist and support the poor and destitute. We hope that with the proposed changes in the future we can make real difference in the lives of the weaker sections.

At last, we would like to thank you for taking the time to engage with us.

Radhey Lakhan Prasad
General Secretary
Lok Sevashram Chikhsaura, Nalanda, Bihar



ANNUAL REPORT 2013-2014

Our Introduction

§ Origin

Lok Sevashram Chikhsaura was established in the year 1992 by a team of social workers and activists to realize the ideology and principle of Gandhi and Jai Prakash Narayan to establish an equal, peaceful and harmonious society for the progress of the well being. To realize this vision, the organization got registered under the Society Registration Act in 1992 and FCR Act in 2005.

§ Vision

Promotion of a society based on the values of peace, equality, social justice, homogeneity and self reliance for all.

§ Mission

To develop the social, economical, cultural and educational set up for a progressive society through democratic pattern and transparency.

§ Objectives

- > To access the services of integrated comprehensive primary health care, education, food and nutrition, sanitation and agriculture practices.
- > To promote information dissemination and awareness programs with village health and sanitation committee, PRIs, social activists and community members on Tuberculosis, HIV/AIDS, Kalazar and Malaria and its prevention.
- > To organize rural women for socio-economic development through income-generation skill training activities.
- > To create equal opportunities of education for the children and adults of disadvantaged sections of the society.
- > To promote livelihood opportunities through proper management of natural resources management and agricultural practices.
- > To develop appropriate rural technology and promotion of non conventional energy sources.
- > To co-ordinate for better health facilities to the rural communities in a sustainable manner.
- > To work for bio-diversity management, disaster management, plantation, pollution and climate change issues.

§ Core Values

We shall always endeavor to achieve and reflect:

- Compassion • Integrity • Commitment • Service • Discipline • Accountability and
- Transparency in all our activities and actions.



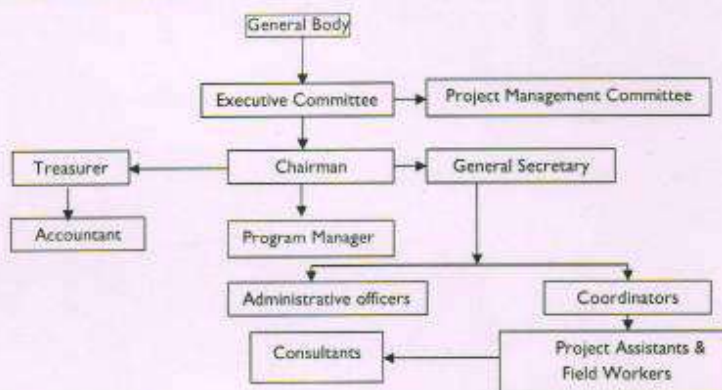
§ Target Population

- (i) Women, children, adolescents, adults, aged and disabled belonging to the poor and excluded community (SC, BC and Minority) of the society.
- (ii) People specially facing health problems like Tuberculosis, Kalazar, Malaria and HIV/AIDS.
- (iii) Small and marginal farmers.

§ Working Area

We are presently operational in Nalanda district in Bihar covering a total of 80 villages of the Hilsa, Tharthari, Ekangarsari, Chandi, Nagarnausa and Karaiparsural blocks of the district.

§ Administrative Structure



§ Executive Committee

The names, addresses, occupations and designations of the executive committee to which, according to the memorandum and bye-laws of the organization, the management of its affairs are entrusted to the following personnel:

Sl. No.	Name	Sex	Designation	Occupation	Experience in Social Work
1.	Gayatri Sinha	Female	Chairman	Social worker	11 years
2.	Radhe Laxhan Prasad	Male	General Secretary	Social worker	22 years
3.	Md. Bahar Ahmad	Male	Treasurer	Social worker	11 years
4.	Ram Nandan Ram	Male	Member	Farmer	22 years
5.	Anita Kumari	Female	Member	Social worker	11 years
6.	Azmat Ara	Female	Member	Social worker	11 years
7.	Kedar Paswan	Male	Member	Social worker	11 years



§ *Human Resources*

<i>Full-Time</i>	<i>Part-Time</i>	<i>Volunteer</i>	<i>Total</i>
12	09	15	36

§ *Financial Capabilities*

<i>Year</i>	<i>Receipts (in Rs.)</i>	<i>Payments (in Rs.)</i>
2013-2014	27.30 Lac	27.17 Lac
2012-2013	26.72 Lac	26.66 Lac
2011-2012	25.88 Lac	25.35 Lac

§ *Our Donors*

- Central Social Welfare Board, New Delhi.
- District Water and Sanitation Committee, Nalanda.
- State Social Welfare Board, Patna.
- DRDA, Nalanda.
- MAMTA Health Institute for Mother and Child, New Delhi.
- Goonj, New Delhi.
- Rural Youth and Coordination Centre, Patna.
- Ministry of Environment and Forest, New Delhi.
- Garmin Evam Nagar Vikas Parishad, Patna.

§ *Our Bankers*

• **For National Fund**

- State Bank of India, Branch Hilsa, Nalanda
A/C No. 30564505698
- Madhya Bihar Gramin Bank, Branch Hilsa, Nalanda
A/C No. 71630100075620
- Bank of India, Branch Bihar Sharif, Nalanda
A/C No. 486110110000019

• **For FC Fund**

- Madhya Bihar Gramin Bank, Branch Chiksaura, Nalanda
A/C No. 71510100010956

PROGRAMS DURING THE YEAR

(I) HEALTH PROGRAMS

- **AXHYA Project:** India bears the highest burden of tuberculosis (TB) globally with an annual incidence of 1.9 million new cases. About 2.6 million people live with HIV and 1.2 million are TB-HIV co-infected. India has one of the highest multidrug-resistant TB (MDR-TB) burdens globally with 99,000 cases annually. In India, MDR-TB in new TB cases is estimated at 3% and in previously treated cases at 12-17%. Successfully addressing TB in India depends not only on dealing with the urgent issues of MDR-TB



and TB-HIV co-infection, but also on a nationwide increase in awareness of TB, TB case detection and access to full treatment. It is in this context that a major civil society partnership initiative on 'Providing Universal Access to Drug-Resistant TB Control Services and Strengthening Civil Society Involvement in TB Care and Control' was envisaged, through which civil society would synergise the efforts against TB with the government, private sector and communities.

Since 2009-10, our organization is supported by MAMTA Health Institute for Mother & Child Health, Patna on the issue concerned. The goal of the project is to decrease morbidity and mortality due to drug resistance TB (DR-TB) in Bihar and improve access to quality TB care and control services through civil society participation. The project is being operational in Hilsa, Karaiparsurai, Ekangarsaray, Chandi, Tharthari & Nagarnausa blocks in Nalanda district in Bihar.



Activities undertaken during the year

Sl. No.	Activities	Numbers
1.	Survey work for identification of the suspects	4800 Houses
2.	Referrals of the identified suspects	543 Persons
3.	Meetings with community, VHSC, PRI, Social Activists, DOTS providers, ANM and Health Workers	96 Numbers
4.	Collection of sputum of the suspects and transportation to concern DMC for test and attachment with Dots Provider of positive patients. It also involve management of DOTS provider if needed	619 Persons



5.	Advocacy for TB patients like Dharna, Rally, Padyatra etc.	63 Numbers
6.	Mixed media activities and wall writings	23 Places

Overall Results

- ♦ 168 patients found positive.
- ♦ 102 patients are taking regular medicines.
- ♦ 63 patients have been completely cured till date.

• **Establishment of Nursing Homes:** A full pledged Nursing Home namely "VISON PLUS" has been established by LSK in the year 2009 at Bhootnath Road, beside TV Tower in Patna in view of catering free health care and cataract operations to the poor people of Bihar. The Nursing Home is being run by LSA Chiksaura through community contribution and donations. It is equipped with all basic facilities and resources to provide quality health care to the patients. In 2013-14, 51 people were provided health check ups and 13 people were provided cataract surgeries.

• **Health and Sanitation Program:** Adequate sanitation, together with good hygiene and safe water are fundamental to good health of the people. In large populace state like Bihar, the sanitarian can affect the environmental changes needed without necessarily gaining the widespread participation or understanding of the people who are to benefit. In rural areas of Bihar, however, this is not so, since the people themselves will have to perform many of the actions needed to promote healthy habits and breaking the chain of transmission of diseases.

Before planning for any educational programs for health and sanitation improvements, it is necessary to obtain the essential facts about the people of the community. It is for instance, necessary to find out what health problems they recognize and are interested in, how much they already know, what the usual channels of communication are, what social, cultural, and other



influences are operating, and what are the existing resources that could contribute to the program. In 2013-14, we organized 04 awareness generation camps in the villages of Hilsa and Karaiparsurai blocks in Nalanda district in Bihar that helped us in sensitizing 276 people (male-142 and female-134) successfully on the issue concern.



(II) RUNNING OF CRECHE CENTRE

In Bihar, where employment is one of the major problems for most of the poor people of the state, poor men and women of the slums/rural areas have to engage themselves in the unskilled labor work to secure livelihood for their families. Typically, they find work as unskilled daily-wage low paid works. While both parents work, their children are left to fend for themselves on a heap of rubble and concrete, with virtually no one to run to fulfill their physical, educational and emotional needs.

LSA Chiksaura is working for the cause of these poor children with an aim to help them to grow up in a better environment and live a dignified life. With grant-in-aid from Central Social Welfare Board, New Delhi, three (03) crèches for children in the age group 0-6 years were established in Ashari, Dullu Bigha and Dargah Road in Hilsa block to provide children a secure and cleaner environment as well as rich cognitive stimulation through play, story and song. Notorious foods and medicines were also provided regularly to the children that helped them to grow better. The details of the crèche centers are as follows:

Sl. No.	Block	Slums	No. of Center	No. of Children		Total
				Boy	Girl	
1.	Hilsa	Asarhi	1	11	14	25
2.	-do-	Dullu Bigha	1	15	10	25
3.	-do-	Dargah Road	1	12	13	25
	Total		3	38	37	75

(III) SKILL TRAINING PROGRAM

• **Vocational Training Program:** Unemployment is one of the major problems in Bihar. Poor youth (male and female) residing in the rural and slums of Bihar want to contribute to their meager family income, but due to lack of vocational skill they are unable to do so. LSA Chiksaura has been involved in the activity since 2012 which is continuing till date with the support of community contribution and donation. Through this initiative, we are providing quality vocational training to poor youth (male and female) of the Hilsa municipal area in Nalanda district in Bihar. In 2013-14, 107 youth (male-44 and female-63) in the age group 15-35 years received training in different income generation trades like shorthand and type writing.



food processing, beautician, diesel engine pump set repairing, plumbing work, sewing/embroidery work, computer application, soft toys making, home nursing attendant, motor vehicle driving, fitter, welder and carpentry. These youths are now successfully employed/self-employed with the sincere effort of the organization. As an essential part of the training, they were also informed on availing loans and subsidies from banks and private financial institutions, so that they can quickly involve in the self-employment process.

The program resulted in quality skill generation among the youth that helped them to earn and moving forward in life with full confidence. The details are as follows:

Sl. No.	Trade	Male	Female	Employed	Self-employed
1.	Shorthand and type writing	22	05	-	18
2.	Food processing	-	15	-	15
3.	Beautician	0	27	-	17
4.	Diesel engine pump set repairing	13	-	-	13
5.	Plumbing work	15	-	-	15
6.	Sewing/embroidery work	-	24	-	24
7.	Computer application	20	09	03	11
8.	Soft toys making	-	42	-	11
9.	Home nursing attendant	-	15	-	-
10.	Motor vehicle driving	12	0	-	08
11.	Fitter and welder	18	-	-	18
12.	Carpentry	17	-	-	11
13.	Mushroom production	-	24	-	19
14.	Vermin composting	32	-	-	06
15.	Bamboo basket and toys making	-	53	-	08
	<i>Total</i>	149	214	03	194

• **Life Skill Training in Schools:** Our elementary school program is a comprehensive, dynamic and developmentally appropriate substance abuse and violence prevention program designed for upper elementary school students. This highly effective curriculum has been proven success in increasing self-esteem, develop healthy attitudes and improve their knowledge of essential life skills - all of which



promote healthy and positive personal development. In 2013-14, 325 school children of Hilsa and Tharthari blocks were successfully covered under this program.

(IV) WORKSHOPS & SEMINARS

LSA Chiksaura believes that information dissemination is important for the development of the society. In 2013-14, workshops and seminars were periodically organized in our all operational blocks covering different issues of socio-economic importance. Experienced resource persons and eminent personalities of the area were invited to share their views with the participants on these issues. The details are as follows:

Subject	Participant
Delaying First Pregnancy	108
Compulsory Marriage	112
PCPNDT Act	74
Marriage at Right Age	108
Solar Energy	32
Farmer's Training	39
Climate Change	57
Right to Information Act	44
Save the Child Hood	35
Human Rights	39
Oil Seeds Production	32
Vaikalpik and Navachari Siksha	54
Rural Development Program	63
Rehabilitation During Flood/ Disasters	86
Rehabilitation Technique and Methods	51
Science and Technology Development	38
<i>Total</i>	<i>972</i>

(V) EDUCATION PROGRAMS

• **Running of Residential School:** Education is one of the important activities of LSA Chiksaura as it has been a major issue for the holistic development of the society. Since inception, we are making sincere efforts to spread education among poor children (boys and girls) of the underprivileged section of the society and has established "Saraswati Residential Public School Chambhera" in Ekangarsarai block in Nalanda district in Bihar. The school is affiliated with Sarva Siksha Abhiyan. At present, 196 children (boys-79 and girls-117) from class I-VIII are getting education through this



school. The school has residential facilities with experienced teachers and all basic facilities to impart quality education to children.

In order to give quality education to the enrolled children, teachers were frequently updated by LSA Chiksaura. Parents meetings were also organized to appraise them about the importance of education to their children as well as to act positively for their better future.



- **Promoting Girl Child Education:** We are also making sincere efforts to promote girl child education in the area. We have established 02 primary education centers in Hilsa block which has been successfully promoting education among 72 girls that belongs to the poor communities of the area.

(VI) AWARENESS GENERATION PROGRAMS

LSA Chiksaura believes that information dissemination is important for the development of the society. In 2013-14, number of awareness generation camps was organized by us in Hilsa blocks in Nalanda districts in Bihar covering health and drinking water issues. Experienced resource persons and eminent personalities of the area attended these awareness generation camps and shared their views and rich knowledge with the participants on the topics. The details are as follows-

Date	Subject	Participant
01-12-2013	HIV/AIDS Awareness Program	77
22-05-2013	Kalazar and Malaria Awareness	57
26-06-2013	Drinking Water Awareness	72
12-12-2013	Girl Health Awareness:	34
<i>Total</i>		240



(VII) CULTURAL PROGRAMS

Cultural programs are important tools to reach to the common masses on any social issue in a positive manner. In 2013-14, street plays, puppet shows and devotional songs are adopted as a means by LSA Chiksaura to spread awareness among the community on health, livelihood, education and sanitation issues. 25 villages of the Hilsa, Tharthari, Ekangarsari and Karaiparsurai blocks of Nalanda district were covered by cultural activities.



(VIII) ENVIRONMENT AWARENESS PROGRAM

LSA Chiksaura is sincere to generate awareness and educate community on maintenance of a clean and pollution free environment. In 2013-14 with the support of community contribution and donation, different programs like awareness camps and street meetings were organized covering topics like solid waste management, environment conservation, community tree plantation and maintenance of clean and protected environment Ekangarsari block. These programs generated desired awareness among the masses on the issue concern.

♦♦

